

CF INSULATION - XLPE

Advanced Thermal Insulation for HVAC & R



PE/XLPE/IXPE FOAM INSULATION

CF - Polyolefin Foam (PE/XLPE/IXPE Foam) is full closed cell structure, flame retardants, and free foam PVC, gives out low smoke and non-toxic matter. The material is supplied with factory applied embossed aluminum foil facing and repositionable acrylic tissue adhesive system. It is used for heat insulation and sound absorption, suitable in the building and construction field, like duct, roof and wall where thermal insulation, moisture resistance, sound and vibration is critical.

PARAMETER SHEET

Physical Properties	Testing Method	Data
Surface Density		25-28 kg/m ³
Color Available		Dark, Grey, White, Red, etc.
Fire and Smoke Behaviour (Alu foil faced)	BS476 part 6 & 7	Class 0, Class 1
	AS1530 Part 3	Ignitability Index: 0
		Spread of Flame Index : 0
		Heat Evolved Index: 0
		Smoke Developed Index: 0
	UL 94	Horizontal Burn : approved (HF-1)(E193277)
Thermal Conductivity Average Temperature 23°C	ASTM C518	0.0327 w/m·k
Water Vapour Permeability	ASTM E96	$\leq 2.3 \times 10^{-15}$ kg/Pa.s.m
Water Vapour Permeability 12mm		0.000195 µg/N.s
Water Absorption by volume	JIS K6767	<0.1% v/v g/cm ³ (0.00038 g/cm ²)
Permeability Resistance Factor		$\mu > 80,000$
Resistance to fungi	ASTM G21	Zero Growth
Ozone Resistance		Excellent
UV Resistance		Excellent
Noise Reduction Coefficient:	AS 1045	0.20(12mm foam thickness)
		0.30(25mm foam thickness)
Temperature Range	-50 °C ~ +90 °C (-58 ~194 °F)	

DUCT INSULATION

XLPE (Crosslinked Polyolefin Foam) is chemically cross-linked polyolefin foam in sheet or roll resulting in a foam product with uniform, closed cells and smooth skins both sides. It is lightweight, flexible and soft to touch, yet strong, tough, resilient and resistant to moisture, many chemicals and high temperature.

CF INSULATION - XLPE is supplied with factory applied embossed aluminum foil facing and repositionable acrylic tissue adhesive system it is used for heat insulation and sound absorbing materials in a host of container's designs and suitable in the building and construction field like duct, roof and wall where thermal insulation, moisture resistance, sound and vibration are critical.

DATA SHEET

Material : Closed cell chemically crosslinked polyolefin foam with factory applied embossed aluminum foil and acrylic adhesive backing

Foam Density : 25-28 kg/m³

Thermal Conductivity : 0.032 W/m.K (mean temperature : 23 °C)

Fire Resistance : Class 1, BS476 part 7; Class 0, BS476 part 6

Water Absorption by Volume : <0.1%

Water Vapour Permeability : 8.19×10^{-15} kg/Pa.s.m.

Ozone Resistance : Excellent

UV Resistance : Excellent

Noise Reduction : 0.2 (12mm foam thickness)

Working Temperature Range : -50 °C to +90 °C

SIZE AVAILABILITY

Thickness : 3, 5, 6, 8, 9, 10, 12, 13, 15, 19, 20, 25, 32, 38, and 50mm (below 13mm - single layer)

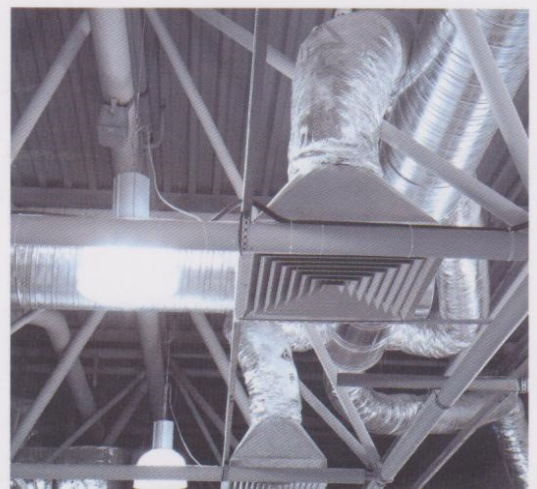
Width : 1.0, 1.2, and 1.5m

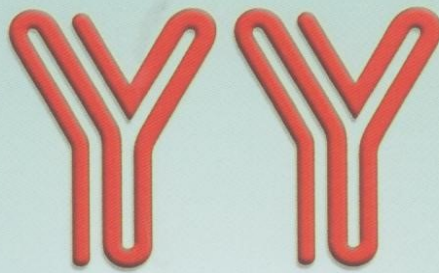
Length : 20m (standard, others available on request)

APPLICATION AREAS

CF INSULATION - XLPE applications mainly include:

- > Duct Insulation
- > Raised Floor Insulation
- > Underslab Insulation
- > AC Unit Insulation
- > Water Pipe Insulation
- > Tank Insulation





(1063119-D)

Y & Y MULTI MEGA SDN. BHD.

No. 151-B-5, Wisma Mutiara Puchong, Jalan Puchong, 58200 Kuala Lumpur.

Tel: 03-7785 2899 Fax: 03-7783 4130 Email: kymultilink@gmail.com